

NSK

FACT BOOK

May 16, 2012

NSK Ltd.

Summary 1

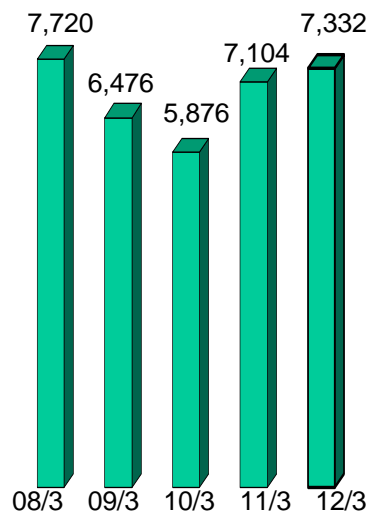
<連結 Consolidated>



	08/3		09/3		10/3		11/3		12/3	
(百万円 ¥ Million)	1st half	Full year	1st half	Full year	1st half	Full year	1st half	Full year	1st half	Full year
売上高 Net sales	369,326	772,036	383,325	647,593	257,871	587,572	352,785	710,431	351,877	733,192
営業利益 Operating income	31,576	69,343	28,613	22,106	(3,911)	11,305	20,293	43,524	22,935	44,417
営業利益率 (%)	8.5%	9.0%	7.5%	3.4%	(1.5%)	1.9%	5.8%	6.1%	6.5%	6.1%
当期純利益 Net income	17,701	42,613	17,666	4,561	(5,894)	4,765	10,565	26,110	14,388	28,514
当期純利益率 (%)	4.8%	5.5%	4.6%	0.7%	(2.3%)	0.8%	3.0%	3.7%	4.1%	3.9%
1株当たり当期純利益 (円) Net income per share (yen)	32.75	78.84	32.68	8.44	(10.90)	8.82	19.54	48.30	26.62	52.75
1株当たり配当金 (円) Dividends per share (yen)	9.00	19.00	10.00	14.00	4.00	8.00	5.00	11.00	6.00	12.00
為替換算レート(期中) : US\$	119.42	114.55	105.95	100.74	95.45	92.83	88.93	85.63	79.70	79.02
Exchange rate	EURO	162.33	162.22	162.88	144.47	133.06	130.89	114.03	112.92	114.64

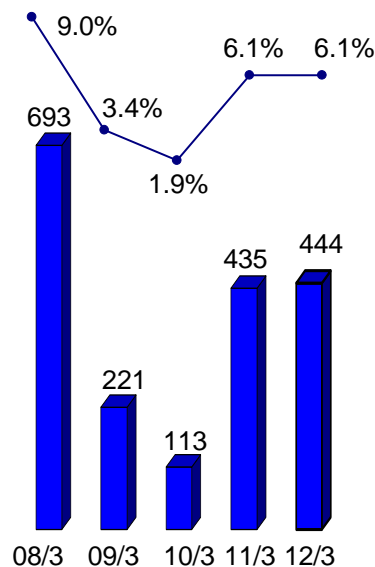
(億円/¥ 100 Million)

売上高 Net sales



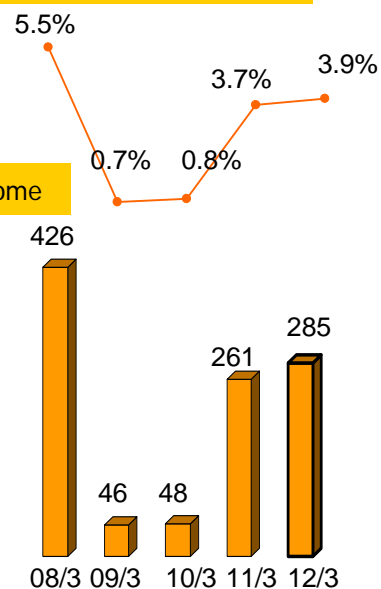
営業利益率 Operating income margin (%)

営業利益
Operating income



当期純利益率 Net income margin (%)

当期純利益 Net income



Summary 2

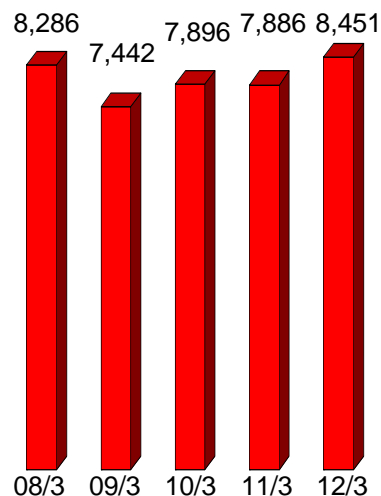
<連結 Consolidated>



	08/3		09/3		10/3		11/3		12/3	
(百万円 ¥Million)	Interim	Year-end	Interim	Year-end	Interim	Year-end	Interim	Year-end	Interim	Year-end
総資産 Total assets	817,540	828,580	828,477	744,229	759,591	789,624	774,761	788,626	793,533	845,073
自己資本 Shareholders' equity	276,366	267,914	281,805	233,395	234,154	247,941	242,422	257,012	254,044	280,312
自己資本比率 Equity ratio	33.8%	32.3%	34.0%	31.4%	30.8%	31.4%	31.3%	32.6%	32.0%	33.2%
1株当たり純資産額 Net assets per share	511.31	495.61	521.28	431.74	433.15	458.65	448.44	475.45	469.96	518.56
有利子負債 Interest-bearing debt	246,896	264,413	261,732	323,165	322,679	304,937	287,588	274,585	291,170	296,750
Net D/E Ratio	0.61	0.56	0.61	0.85	0.86	0.73	0.68	0.60	0.69	0.58
為替換算レート (期末):US\$ Exchange rate EURO	115.43	100.19	103.57	98.23	90.21	93.04	83.82	83.15	76.65	82.19
ROA	4.3%	5.2%	4.3%	0.6%	(1.6%)	0.6%	2.7%	3.3%	3.6%	3.5%
ROE	13.1%	16.1%	12.9%	1.8%	(5.0%)	2.0%	8.6%	10.3%	11.3%	10.6%

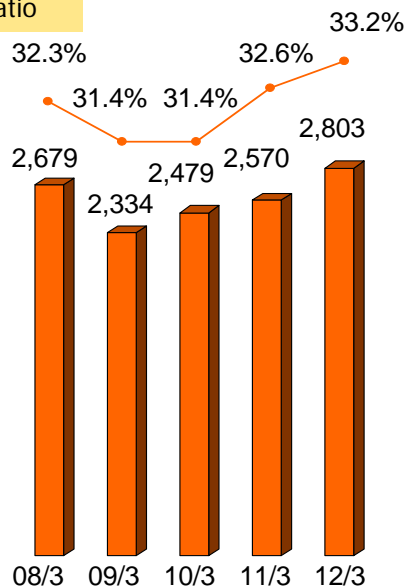
(億円/¥100 Million)

総資産 Total assets



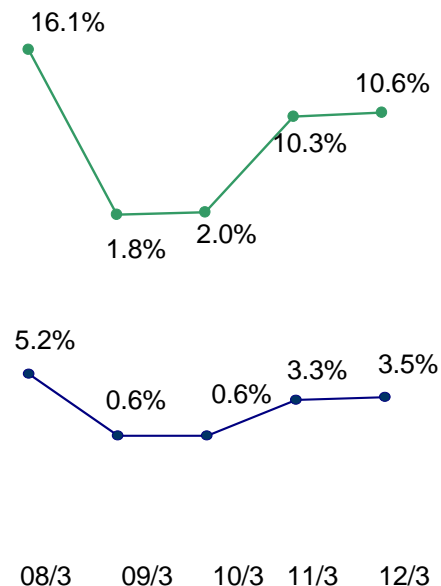
自己資本比率 Equity ratio

自己資本 Shareholders' equity



ROE

ROA



事業別セグメント情報 Business Segment Data

<連結 Consolidated>



旧セグメント Previous segments (百万円 ¥Million)	08/3		09/3		10/3	
	1st half	Full year	1st half	Full year	1st half	Full year
売上高合計 Net sales	369,326	772,036	383,325	647,593	257,871	587,572
営業利益 Operating income	31,576	69,343	28,613	22,106	(3,911)	11,305
営業利益率 (%)	8.5%	9.0%	7.5%	3.4%	(1.5%)	1.9%
産業機械軸受 Industrial machinery bearings	114,776	239,056	121,700	209,530	76,176	166,873
営業利益 Operating income	15,525	33,489	16,194	19,466	331	5,806
営業利益率 (%)	13.5%	14.0%	13.3%	9.3%	0.4%	3.5%
自動車関連製品 Automotive products	209,060	435,705	214,138	352,453	159,759	366,463
自動車軸受 Automotive bearings	112,402	232,075	116,720	189,998	83,905	191,385
自動車部品 Automotive components	96,658	203,630	97,418	162,455	75,854	175,078
営業利益 Operating income	13,940	30,660	10,823	6,812	3,740	18,281
営業利益率 (%)	6.7%	7.0%	5.1%	1.9%	2.3%	5.0%
精機製品 Precision machinery and parts	31,846	68,186	31,053	57,491	13,624	35,089
営業利益 Operating income	3,835	8,620	2,974	527	(4,471)	(7,467)
営業利益率 (%)	12.0%	12.6%	9.6%	0.9%	(32.8%)	(21.3%)
その他 Other	24,518	56,227	29,912	50,687	14,917	34,898
営業利益 Operating income	1,007	2,839	1,757	832	(939)	(171)
営業利益率 (%)	4.1%	5.1%	5.9%	1.6%	(6.3%)	(0.5%)
消去(売上高) Eliminations (Sales)	(10,876)	(27,140)	(13,479)	(22,568)	(6,607)	(15,753)
消去又は全社費用 Eliminations/corporate	(2,731)	(6,266)	(3,137)	(5,531)	(2,572)	(5,144)

新セグメント New segments (百万円 ¥Million)	10/3		11/3		12/3	
	1st half	Full year	1st half	Full year	1st half	Full year
売上高合計 Net sales	257,871	587,572	352,785	710,431	351,877	733,192
営業利益 Operating income	(3,911)	11,305	20,293	43,524	22,935	44,417
営業利益率 (%)	(1.5%)	1.9%	5.8%	6.1%	6.5%	6.1%
産業機械事業 Industrial machinery business	89,800	201,962	127,461	259,095	133,112	255,835
産業機械軸受 Industrial machinery bearings	76,176	166,873	98,716	199,898	108,711	210,832
精機製品 Precision machinery and parts	13,624	35,089	28,745	59,197	24,400	45,002
営業利益 Operating income	(4,140)	(1,661)	8,236	20,379	15,045	25,689
営業利益率 (%)	(4.6%)	(0.8%)	6.5%	7.9%	11.3%	10.0%
自動車事業 Automotive business	159,759	366,463	212,168	424,157	200,106	444,585
自動車軸受 Automotive bearings	83,905	191,385	108,757	216,724	103,295	220,907
自動車部品 Automotive components	75,854	175,078	103,411	207,433	96,810	223,678
営業利益 Operating income	3,740	18,281	13,582	26,898	9,187	22,637
営業利益率 (%)	2.3%	5.0%	6.4%	6.3%	4.6%	5.1%
その他 Other	14,917	34,898	26,096	53,108	32,756	61,028
営業利益 Operating income	(939)	(171)	2,155	3,500	2,025	3,258
営業利益率 (%)	(6.3%)	(0.5%)	8.3%	6.6%	6.2%	5.3%
消去(売上高) Eliminations (Sales)	(6,607)	(15,753)	(12,941)	(25,930)	(14,097)	(28,256)
消去又は全社費用 Eliminations/corporate	(2,572)	(5,144)	(3,682)	(7,254)	(3,322)	(7,168)

顧客地域別売上高 Sales by Customer Location

<連結 Consolidated>

(百万円 ¥Million)	08/3		09/3		10/3		11/3		12/3	
	1st half	Full year	1st half	Full year	1st half	Full year	1st half	Full year	1st half	Full year
売上高合計 Net sales	369,326	772,036	383,325	647,593	257,871	587,572	352,785	710,431	351,877	733,192
日本 Japan	185,752	388,927	192,860	323,376	126,746	289,540	176,051	354,543	170,949	363,754
海外 Non-Japan(※)	183,574	383,109	190,465	324,217	131,125	298,032	176,734	355,888	180,928	369,438
米州 The Americas	55,294	107,321	49,433	78,754	31,311	70,609	43,717	85,466	39,036	86,267
欧州 Europe	63,001	133,853	69,261	111,866	45,502	98,504	49,373	102,176	54,715	107,958
アジア Asia	65,278	141,933	71,769	133,596	54,311	128,918	83,644	168,246	87,177	175,213

※四捨五入による調整せず。 Not including minor adjustments to match the total.

法人所在地別セグメント情報 Geographical Segment Data

<連結 Consolidated>

(百万円 ¥ Million)	08/3		09/3		10/3		11/3		12/3	
	1st half	Full year	1st half	Full year	1st half	Full year	1st half	Full year	1st half	Full year
売上高合計 Net sales	369,326	772,036	383,325	647,593	257,871	587,572	352,785	710,431	351,877	733,192
営業利益 Operating income	31,576	69,343	28,613	22,106	(3,911)	11,305	20,293	43,524	22,935	44,417
営業利益率 (%)	8.5%	9.0%	7.5%	3.4%	(1.5%)	1.9%	5.8%	6.1%	6.5%	6.1%
日本 Japan	262,940	558,004	281,511	479,408	187,516	429,233	263,977	532,340	262,732	538,393
営業利益 Operating income	21,405	46,833	16,407	6,550	(5,121)	3,958	14,798	32,387	17,501	33,626
営業利益率 (%)	8.1%	8.4%	5.8%	1.4%	(2.7%)	0.9%	5.6%	6.1%	6.7%	6.2%
米州 The Americas	54,524	106,004	49,048	78,229	30,677	69,355	43,159	84,715	38,946	86,056
営業利益 Operating income	2,506	4,867	2,161	926	114	2,223	1,898	4,076	1,784	4,134
営業利益率 (%)	4.6%	4.6%	4.4%	1.2%	0.4%	3.2%	4.4%	4.8%	4.6%	4.8%
欧州 Europe	66,177	139,956	71,709	114,640	46,428	100,629	50,504	105,111	55,689	109,221
営業利益 Operating income	4,085	10,141	6,129	9,433	2,213	3,205	2,158	4,774	1,554	3,904
営業利益率 (%)	6.2%	7.2%	8.5%	8.2%	4.8%	3.2%	4.3%	4.5%	2.8%	3.6%
アジア Asia	55,435	117,994	60,984	108,471	42,891	106,121	69,789	140,816	78,427	162,245
営業利益 Operating income	6,286	13,189	6,737	9,568	1,666	7,572	5,713	11,098	5,805	10,516
営業利益率 (%)	11.3%	11.2%	11.0%	8.8%	3.9%	7.1%	8.2%	7.9%	7.4%	6.5%
消去(売上高) Eliminations (Sales)	(69,752)	(149,923)	(79,928)	(133,155)	(49,642)	(117,767)	(74,645)	(152,552)	(83,918)	(162,723)
消去又は全社 Eliminations/corporate	(2,707)	(5,688)	(2,822)	(4,371)	(2,784)	(5,653)	(4,277)	(8,812)	(3,711)	(7,764)

※四捨五入等による調整せず。 Not including minor adjustments to match the total.

設備投資・減価償却・研究開発費

Capital Expenditures, Depreciation and R&D Expenses <連結 Consolidated>

(百万円 ¥Million)	08/3		09/3		10/3		11/3		12/3	
	1st half	Full year	1st half	Full year	1st half	Full year	1st half	Full year	1st half	Full year
設備投資(有形のみ) Capital expenditures (Excluding intangible assets)	19,336	51,971	24,720	41,915	8,754	19,830	15,561	38,748	21,765	50,269
日本 Japan	11,341	30,819	13,930	24,530	4,337	9,879	5,677	17,530	8,944	19,215
米州 The Americas	1,828	3,801	1,035	2,209	445	1,022	752	2,976	707	3,287
欧州 Europe	2,388	7,707	2,564	3,501	286	1,147	843	3,257	1,808	5,318
アジア Asia	3,779	9,644	7,191	11,675	3,686	7,782	8,289	14,985	10,306	22,449
減価償却費(有形のみ) Depreciation (Excluding intangible assets)	17,777	37,443	18,888	38,452	17,481	35,628	16,226	33,142	16,285	34,035
研究開発費 R&D expenses	4,994	10,240	5,391	10,691	4,328	8,794	4,982	10,515	5,029	10,373

※四捨五入等による調整を含む。 Including minor adjustments to match the total.

(百万円 ¥Million)	08/3		09/3		10/3		11/3		12/3	
	Interim	Year-end	Interim	Year-end	Interim	Year-end	Interim	Year-end	Interim	Year-end
棚卸資産 Inventories	107,005	101,849	119,282	106,669	103,496	105,529	104,686	111,649	116,951	115,417
日本 Japan	49,435	47,202	56,343	50,521	49,204	49,351	50,689	52,720	53,697	50,022
米州 The Americas	17,576	16,339	18,369	16,433	14,183	14,468	12,967	13,454	14,190	14,173
欧州 Europe	21,772	20,581	22,648	18,987	20,283	18,375	16,169	17,819	18,226	17,834
アジア Asia	18,222	17,727	21,922	20,729	19,826	23,335	24,861	27,656	30,838	33,388
棚卸資産回転数 Inventory turnover (times)	7.0	7.5	6.9	6.2	4.9	5.5	6.7	6.5	6.2	6.5

※四捨五入等による調整を含む。 Including minor adjustments to match the total.

有利子負債 Interest-bearing Debt



<連結 Consolidated>

(百万円 ￥Million)	08/3		09/3		10/3		11/3		12/3	
	Interim	Year-end	Interim	Year-end	Interim	Year-end	Interim	Year-end	Interim	Year-end
有利子負債合計 Interest-bearing debt	246,896	264,413	261,732	323,165	322,679	304,937	287,588	274,585	291,170	296,750
短期借入金 Short-term loans	85,224	84,787	87,704	90,175	87,897	71,367	75,471	81,442	83,056	84,403
長期借入金 Long-term loans	46,672	42,625	47,027	105,990	107,481	113,270	101,816	97,842	113,113	147,346
社債 Corporate bonds	115,000	137,000	127,000	127,000	127,300	120,300	110,300	95,300	95,000	65,000
Net D/E ratio	0.61	0.56	0.61	0.85	0.86	0.73	0.68	0.60	0.69	0.58

※四捨五入等による調整せず。 Not including minor adjustments to match the total.

連結貸借対照表 Consolidated Balance Sheets



(百万円 ¥Million)	08/3		09/3		10/3		11/3		12/3	
	Interim	Year-end	Interim	Year-end	Interim	Year-end	Interim	Year-end	Interim	Year-end
資産の部 Assets										
流動資産 Current assets	381,169	404,412	405,159	369,590	377,457	411,167	414,797	418,584	428,988	454,631
現金及び預金 Cash and deposits	73,648	66,259	60,081	77,712	80,847	78,421	80,270	71,047	51,632	72,726
受取手形及び売掛金 Notes and accounts receivable	130,813	137,439	149,168	97,890	115,380	134,409	136,824	136,016	143,772	155,234
有価証券 Short-term investment securities	27,875	51,600	29,298	46,300	39,041	49,438	47,790	51,387	68,484	66,067
棚卸資産 Inventories	107,005	101,849	119,282	106,669	103,496	105,529	104,686	111,649	116,951	115,417
その他 Other current assets	41,828	47,265	47,330	41,019	38,693	43,370	45,227	48,485	48,149	45,187
固定資産 Non-current assets	436,370	424,167	423,318	374,638	382,134	378,456	359,963	370,042	364,545	390,442
有形固定資産 Property, plant and equipment	262,225	268,055	272,708	249,721	244,643	237,750	230,296	235,906	235,028	251,644
無形固定資産 Intangible fixed assets	10,543	10,520	10,584	10,483	10,638	10,594	10,439	10,509	10,659	12,526
投資等 Investments and other assets	163,602	145,592	140,026	114,434	126,853	130,112	119,228	123,627	118,858	126,272
資産合計 Total assets	817,540	828,580	828,477	744,229	759,591	789,624	774,761	788,626	793,533	845,073

連結貸借対照表 Consolidated Balance Sheets

	08/3		09/3		10/3		11/3		12/3	
(百万円 ¥Million)	Interim	Year-end	Interim	Year-end	Interim	Year-end	Interim	Year-end	Interim	Year-end
負債の部 Liabilities										
流動負債 Current liabilities	292,478	294,318	284,998	210,322	236,218	257,706	264,152	293,881	290,987	308,501
支払手形及び買掛金 Notes and accounts payable	125,109	130,966	132,304	74,006	89,143	114,552	124,330	124,103	126,473	137,607
短期借入金・CP・社債 Short-term loans, Commercial paper, current portion of corporate bonds	108,224	94,787	87,704	97,175	104,897	96,367	90,771	111,742	113,056	114,403
その他 Other current liabilities	59,145	68,565	64,990	39,141	42,178	46,787	49,051	58,036	51,458	56,491
固定負債 Non-current assets	233,074	250,486	245,334	285,119	273,327	267,229	250,981	219,475	230,953	237,506
社債 Corporate bonds	92,000	127,000	127,000	120,000	110,300	95,300	95,000	65,000	65,000	35,000
長期借入金 Long-term loans	46,672	42,625	47,027	105,990	107,481	113,270	101,816	97,842	113,113	147,346
その他 Other long-term liabilities	94,402	80,861	71,307	59,129	55,546	58,659	54,165	56,633	52,840	55,160
負債合計 Total liabilities	525,553	544,804	530,333	495,442	509,546	524,935	515,133	513,357	521,941	546,007
純資産の部 Net assets										
株主資本 Shareholders' equity	276,665	296,193	291,075	275,807	267,752	276,248	284,111	296,392	308,639	319,514
資本金 Common stock	67,176	67,176	67,176	67,176	67,176	67,176	67,176	67,176	67,176	67,176
資本剰余金 Additional paid-in capital	78,278	78,304	78,324	78,324	78,325	78,330	78,334	78,334	78,340	78,340
利益剰余金 Retained earnings	135,345	154,846	149,724	134,455	126,406	134,902	142,763	155,062	167,307	178,186
自己株式 Treasury stock	(4,134)	(4,134)	(4,151)	(4,149)	(4,156)	(4,160)	(4,162)	(4,180)	(4,184)	(4,188)
その他の包括利益累計額 Accumulated other comprehensive income	(298)	(28,279)	(9,269)	(42,412)	(33,597)	(28,306)	(41,689)	(39,380)	(54,595)	(39,203)
その他有価証券評価差額金 Valuation difference on available-for-sale securities	33,877	18,216	16,011	5,528	10,558	13,701	9,174	12,213	8,849	14,766
為替換算調整勘定 Translation adjustments	(9,280)	(21,586)	(25,281)	(47,940)	(44,156)	(42,007)	(50,863)	(51,593)	(63,444)	(53,969)
英国子会社等の退職給付債務処理累計額 Unfunded retirement benefits obligation of overseas subsidiaries	(24,895)	(24,909)	-	-	-	-	-	-	-	-
新株予約権 Share subscription rights	108	170	234	289	352	423	497	569	481	540
少数株主持分 Minority interests	15,511	15,690	16,104	15,102	15,537	16,323	16,707	17,686	17,066	18,212
純資産合計 Total net assets	291,987	283,775	298,144	248,787	250,044	264,688	259,627	275,269	271,592	299,066
負債純資産合計 Total liabilities and net assets	817,540	828,580	828,477	744,229	759,591	789,624	774,761	788,626	793,533	845,073

連結損益計算書 Consolidated Statements of Operations



	08/3		09/3		10/3		11/3		12/3	
(百万円 ¥Million)	1st half	Full year	1st half	Full year	1st half	Full year	1st half	Full year	1st half	Full year
売上高 Net sales	369,326	772,036	383,325	647,593	257,871	587,572	352,785	710,431	351,877	733,192
国内売上高 Japan	185,752	388,927	192,860	323,376	126,746	289,540	176,051	354,542	170,949	363,754
海外売上高 Non-Japan	183,574	383,109	190,465	324,217	131,125	298,032	176,734	355,889	180,928	369,438
売上原価 Cost of sales	284,555	593,736	299,000	522,010	216,258	482,743	281,027	562,952	276,943	585,008
原価率 (%)	77.0%	76.9%	78.0%	80.6%	83.9%	82.2%	79.7%	79.2%	78.7%	79.8%
販売費及び一般管理費 Selling, general and administrative expenses	53,194	108,956	55,712	103,476	45,524	93,524	51,464	103,954	51,998	103,767
営業利益 Operating income (loss)	31,576	69,343	28,613	22,106	(3,911)	11,305	20,293	43,524	22,935	44,417
営業利益率 (%)	8.5%	9.0%	7.5%	3.4%	(1.5%)	1.9%	5.8%	6.1%	6.5%	6.1%
営業外収益 Non-operating income	5,194	10,882	6,011	8,266	3,853	9,328	3,772	8,177	4,311	8,586
受取利息・配当金 Interest and dividend income	1,629	3,091	1,810	3,209	1,062	1,936	844	1,743	896	1,800
持分法投資利益 Equity in earnings of affiliates	1,919	4,475	1,953	2,200	1,012	2,984	1,796	3,568	1,526	3,481
その他 Other	1,646	3,316	2,248	2,856	1,779	4,407	1,132	2,866	1,889	3,305
営業外費用 Non-operating expenses	7,402	15,371	5,707	13,409	8,658	13,034	6,718	13,128	5,408	10,999
支払利息 Interest expenses	3,140	6,246	3,047	6,117	2,917	5,441	2,306	4,656	2,427	4,906
その他 Other	4,262	9,125	2,660	7,292	5,741	7,593	4,412	8,472	2,981	6,093
経常利益 Ordinary income (loss)	29,368	64,854	28,916	16,964	(8,716)	7,598	17,347	38,572	21,839	42,004
経常利益率 (%)	8.0%	8.4%	7.5%	2.6%	(3.4%)	1.3%	4.9%	5.4%	6.2%	5.7%
特別利益 Extraordinary gain	159	871	489	528	-	-	-	-	-	-
特別損失 Extraordinary loss	164	2,112	1,739	7,161	1,120	1,263	-	333	-	744
税金等調整前当期純利益 Income (loss) before tax expenses and minority interests	29,363	63,613	27,666	10,330	(9,836)	6,335	17,347	38,239	21,839	41,259
法人税・住民税及び事業税 Current income taxes	6,462	15,646	8,883	6,013	(4,107)	5,030	6,115	10,219	6,902	10,274
法人税等調整額 Deferred income taxes	4,207	3,526	-	(1,125)	-	(4,211)	-	586	-	1,607
少数株主利益 Minority interests	991	1,827	1,117	881	165	750	666	1,324	547	863
当期純利益 Net income (loss)	17,701	42,613	17,666	4,561	(5,894)	4,765	10,565	26,110	14,388	28,514
当期純利益率 (%)	4.8%	5.5%	4.6%	0.7%	(2.3%)	0.8%	3.0%	3.7%	4.1%	3.9%
(参考)連結ROE (Ref) Consolidated ROE	13.1%	16.1%	12.9%	1.8%	(5.0%)	2.0%	8.6%	10.3%	11.3%	10.6%
一株当たり純利益 Net income per share (Yen)	¥32.75	¥78.84	¥32.68	¥8.44	(¥10.90)	¥8.82	¥19.54	¥48.30	¥26.62	¥52.75

連結キャッシュ・フロー Consolidated Statements of Cash Flows



(百万円 ¥Million)	08/3		09/3		10/3		11/3		12/3	
	1st half	Full year	1st half	Full year	1st half	Full year	1st half	Full year	1st half	Full year
営業活動によるキャッシュ・フロー Operating activities										
税金等調整前当期純利益 Income (loss) before income taxes and minority interests	29,363	63,613	27,666	10,330	(9,836)	6,335	17,347	38,239	21,839	41,259
減価償却費 Depreciation and amortization	18,249	38,380	19,420	39,729	18,171	37,149	17,070	34,943	17,154	35,807
のれん償却額 Amortization of goodwill	353	756	342	701	504	866	386	760	384	765
貸倒引当金の増減額(減少) Increase (decrease) in allowance for doubtful accounts	(727)	(852)	(67)	263	(447)	(287)	(222)	(363)	86	111
退職給付引当金及び前払年金費用の増減額 Increase (decrease) in provision for retirement benefits and prepaid pension cost	(3,788)	(8,969)	(3,141)	(4,262)	(1,208)	(943)	305	822	(467)	(8)
受取利息及び受取配当金 Interest and dividend income	(1,629)	(3,091)	(1,810)	(3,209)	(1,062)	(1,936)	(844)	(1,743)	(896)	(1,800)
支払利息 Interest expenses	3,140	6,246	3,047	6,117	2,917	5,441	2,306	4,656	2,427	4,906
持分法による投資利益(())は益 Equity in losses (earnings) of affiliates	(1,919)	(4,475)	(1,953)	(2,200)	(1,012)	(2,984)	(1,796)	(3,568)	(1,526)	(3,481)
有形固定資産売却益 Gain on sales of property, plant and equipment	-	-	(489)	(528)	-	-	-	-	-	-
投資有価証券売却益 Gain on sales of investment securities	(159)	(871)	-	-	-	-	-	-	-	-
投資有価証券評価損 Loss on devaluation of investment securities	-	-	1,739	3,851	-	-	-	333	-	744
関係会社株式売却損 Loss on sales of stocks of affiliates	164	164	-	-	-	-	-	-	-	-
損害賠償損失 Product compensation	-	1,948	-	-	-	-	-	-	-	-
事業構造改革費用 Business restructuring expenses	-	-	-	3,310	1,120	1,263	-	-	-	-
売上債権の増減額(増加) Decrease (increase) in notes and accounts receivable	2,678	(8,607)	(10,322)	34,159	(17,368)	(36,523)	(6,908)	(5,366)	(12,715)	(19,831)
たな卸資産の増減額(増加) Decrease (increase) in inventories	(490)	(590)	(19,680)	(14,590)	4,150	2,178	(3,860)	(10,312)	(11,536)	(4,933)
仕入債務の増減額(減少) Increase (decrease) in notes and accounts payable	2,349	9,392	1,734	(55,167)	15,582	41,112	11,010	10,474	3,512	13,620
その他 Others	(1,549)	(1,394)	4,462	4,689	515	(768)	4,035	3,567	(1,008)	83
小計 Subtotal	46,035	91,649	20,949	23,193	12,025	50,902	38,830	72,444	17,253	67,244
利息及び配当金の受取額 Interest and dividends received	2,354	5,104	4,538	10,494	1,548	3,276	2,151	5,242	2,091	5,042
利息の支払額 Interest paid	(3,183)	(6,275)	(3,185)	(6,023)	(2,918)	(5,554)	(2,138)	(4,638)	(2,219)	(4,840)
法人税等の支払額 Income taxes paid	(12,799)	(21,242)	(7,910)	(15,878)	4,919	2,483	(4,538)	(8,074)	(6,186)	(10,288)
営業活動によるキャッシュ・フロー Operating activities	32,407	69,236	14,391	11,785	15,574	51,108	34,304	64,973	10,939	57,158

連結キャッシュ・フロー Consolidated Statements of Cash Flows



(百万円 ¥Million)	08/3		09/3		10/3		11/3		12/3	
	1st half	Full year	1st half	Full year	1st half	Full year	1st half	Full year	1st half	Full year
投資活動によるキャッシュ・フロー Investing activities										
定期預金の純増減額(増加) Net decrease (increase) in time deposits	115	14,442	(30)	36	13	(5)	(947)	(874)	(611)	(2,126)
有価証券の取得による支出 Purchase of short-term investment securities	(9,977)	(14,287)	(3,500)	(3,501)	(0)	(4,802)	(4,800)	(8,299)	(3,300)	(6,000)
有価証券の売却による収入 Proceeds from sales of short-term investment securities	19,372	30,849	8,284	8,286	17	40	4,800	9,600	3,545	7,129
有形固定資産の取得による支出 Purchase of property, plant and equipment	(20,139)	(46,782)	(30,476)	(50,795)	(12,093)	(22,053)	(15,164)	(33,543)	(24,993)	(50,580)
有形固定資産の売却による収入 Proceeds from sales of property, plant and equipment	523	1,047	867	1,207	681	930	263	498	1,134	1,410
投資有価証券の取得による支出 Purchase of investment securities	(3,813)	(10,263)	(953)	(977)	(3,399)	(3,564)	(20)	(140)	(372)	(1,492)
投資有価証券の売却による収入 Proceeds from sales of investment securities	1,132	1,979	60	1,860	505	2,309	1,500	1,840	305	333
連結の範囲の変更を伴う子会社株式の取得による支出 Payments for purchase of subsidiary companies' stock resulting in changes in scope of consolidation	-	-	-	-	(413)	(413)	-	-	-	-
連結の範囲の変更を伴う子会社株式の取得による収入 Proceeds from purchase of subsidiary companies' stock resulting in changes in scope of consolidation	73	772	-	-	-	-	-	15	-	-
貸付による支出 Payments for loans receivable	(410)	(474)	(91)	(147)	(31)	(340)	(26)	(58)	(45)	(119)
貸付金の回収による収入 Collection of loans receivable	74	221	70	119	58	498	153	344	56	199
その他 Others	1,165	(692)	(1,174)	(2,509)	(1,011)	(1,955)	(1,034)	(2,730)	(1,916)	(4,843)
投資活動によるキャッシュ・フロー Investing activities	(11,883)	(23,187)	(26,943)	(46,422)	(15,672)	(29,355)	(15,276)	(33,348)	(26,198)	(56,090)
財務活動によるキャッシュ・フロー Financing activities										
短期借入金の純増減額(減少) Net increase (decrease) in short-term loans	(2,108)	(6,690)	3,666	10,496	(3,222)	(11,874)	(3,580)	1,908	13,143	4,610
長期借入れによる収入 Increase in long-term loans	1	10,050	6,830	77,624	1,016	11,479	709	1,626	17,334	63,493
長期借入金の返済による支出 Repayments of long-term loans	(582)	(11,392)	(5,451)	(16,246)	(1,417)	(13,007)	(1,712)	(6,330)	(11,782)	(16,355)
社債の発行による収入 Proceeds from issuance of bonds	-	35,000	-	-	-	-	-	-	-	-
社債の償還による支出 Payments for redemption of corporate bonds	(10,000)	(23,000)	(10,000)	(10,000)	-	(7,000)	(10,000)	(25,000)	(300)	(30,300)
自己株式の取得による支出 Acquisition of treasury stock	(85)	(121)	(45)	(64)	(10)	(22)	(8)	(22)	(6)	(9)
配当金の支払額 Dividends paid	(4,866)	(9,731)	(5,408)	(10,816)	(2,167)	(4,335)	(2,166)	(4,873)	(3,247)	(6,490)
少数株主への配当金の支払額 Dividends paid to minority shareholders	(253)	(423)	(572)	(680)	(116)	(157)	(244)	(244)	(380)	(379)
その他 Others	37	386	189	215	56	(38)	(123)	(29)	(70)	68
財務活動によるキャッシュ・フロー Financing activities	(17,857)	(5,923)	(10,792)	50,529	(5,860)	(24,956)	(17,126)	(32,966)	14,690	14,637
現金及び現金同等物に係る換算差額 Effect of exchange rate changes on cash and cash equivalents	447	(945)	(865)	(4,175)	813	1,219	(1,868)	(1,762)	(2,583)	(573)
現金及び現金同等物の増減額(減少) Net increase (decrease) in cash and cash equivalents	3,114	39,180	(24,209)	11,718	(5,144)	(1,984)	33	(3,103)	(3,151)	15,132
現金及び現金同等物の期首残高 Cash and cash equivalents at beginning of the year	73,319	73,319	113,226	113,226	124,944	124,944	123,437	123,437	120,333	120,333
連結子会社の決算期変更による増減額 Increase (decrease) in cash and cash equivalents resulting from changes in fiscal year-ends of consolidated subsidiaries	726	726	-	-	477	477	-	-	(157)	(157)
現金及び現金同等物の期末残高 Cash and cash equivalents at end of the period	77,159	113,226	89,017	124,944	120,276	123,437	123,470	120,333	117,023	135,307

人員 Number of Employees

<連結 Consolidated>

(Head-counts)	08/3		09/3		10/3		11/3		12/3	
	Interim	Year-end	Interim	Year-end	Interim	Year-end	Interim	Year-end	Interim	Year-end
連結合計 Consolidated	24,211	25,069	26,024	24,050	24,253	24,633	25,207	26,334	27,055	27,444
日本 Japan	10,533	10,695	11,234	11,155	11,597	11,429	11,478	11,295	11,401	11,263
米州 The Americas	3,003	3,080	3,004	2,308	2,363	2,365	2,415	2,523	2,533	2,577
欧州 Europe	4,120	4,270	4,372	3,542	3,121	3,029	3,055	3,172	3,227	3,328
アジア Asia	6,555	7,024	7,414	7,045	7,172	7,810	8,259	9,344	9,894	10,276