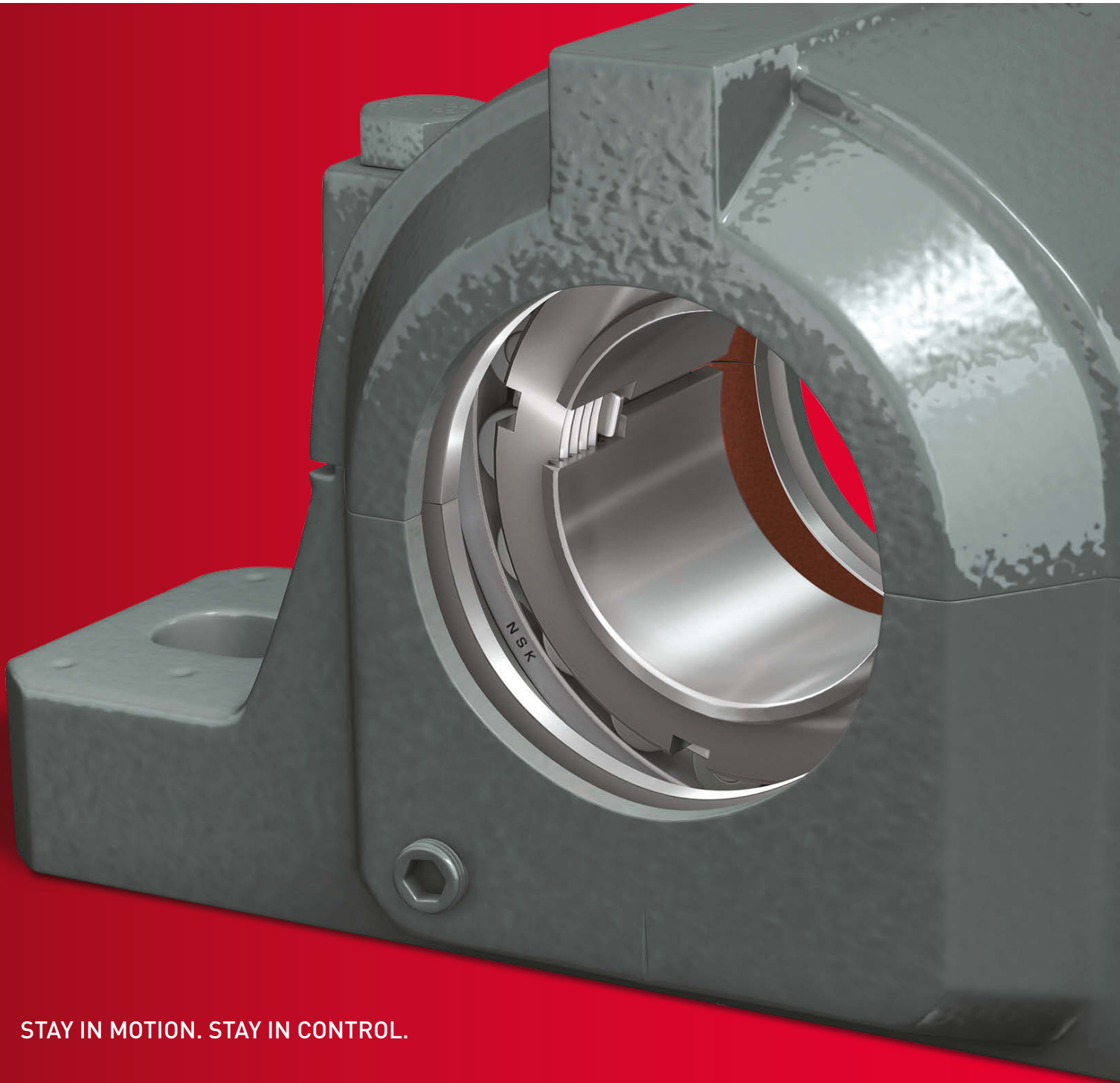


NSK

SNN SERIES PILLOW BLOCKS

HIGH-PERFORMANCE MODULAR BEARING HOUSINGS



STAY IN MOTION. STAY IN CONTROL.



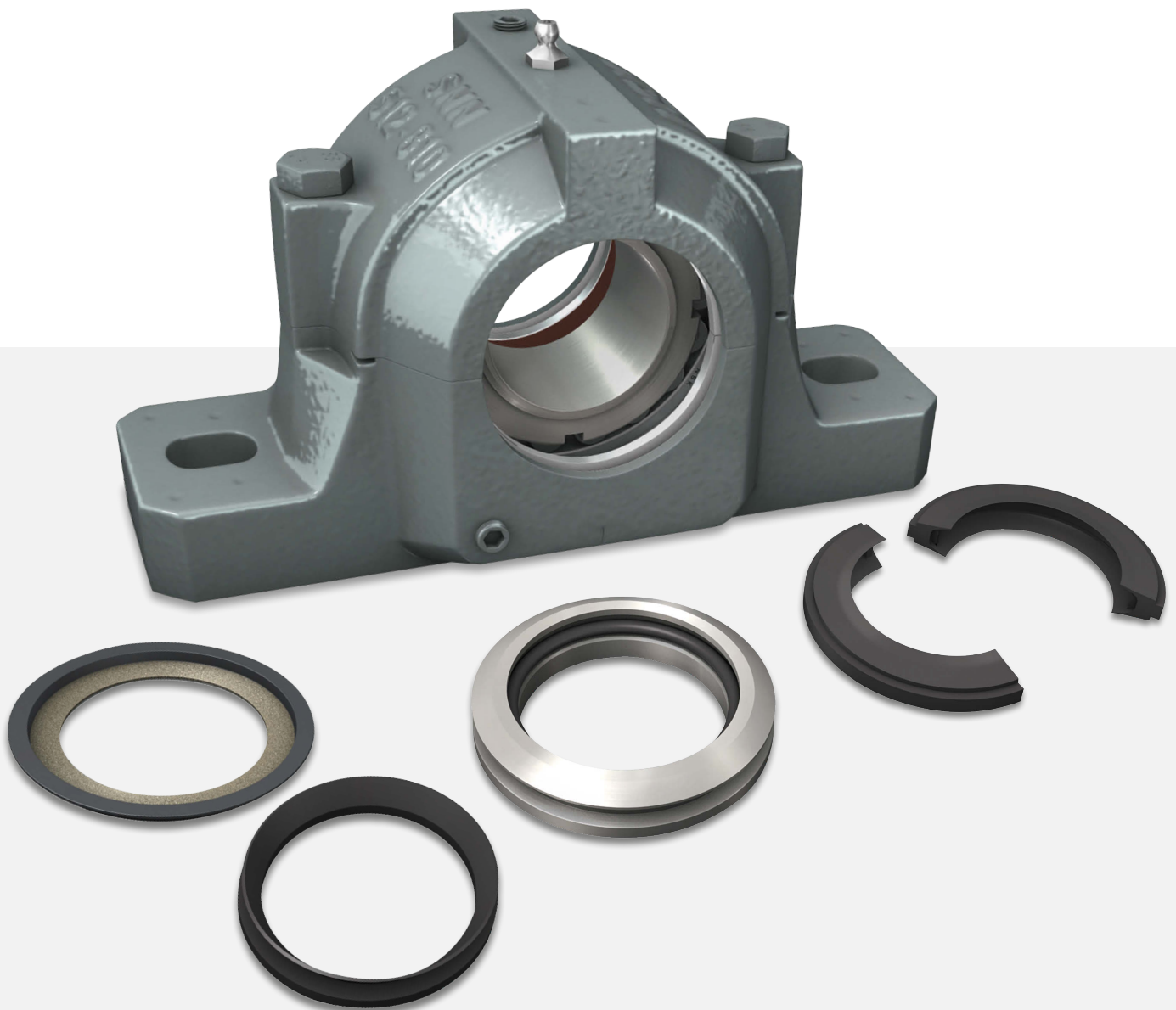
SNN SERIES PILLOW BLOCKS

THE SNN SERIES. SIMPLY MORE.

Mining. Cement. Metals. Conveyors. Blowers. With the SNN Series, you have the ideal choice for maximizing bearing performance, efficiency, and duty life for a wide array of applications. Backed by industry expertise with optimizing bearing installations for greater consistency, output, and cost reduction. And you have the peace of mind that comes with over 100 years of design, engineering, and manufacturing excellence: NSK.

SMARTER. STRONGER. LONGER.

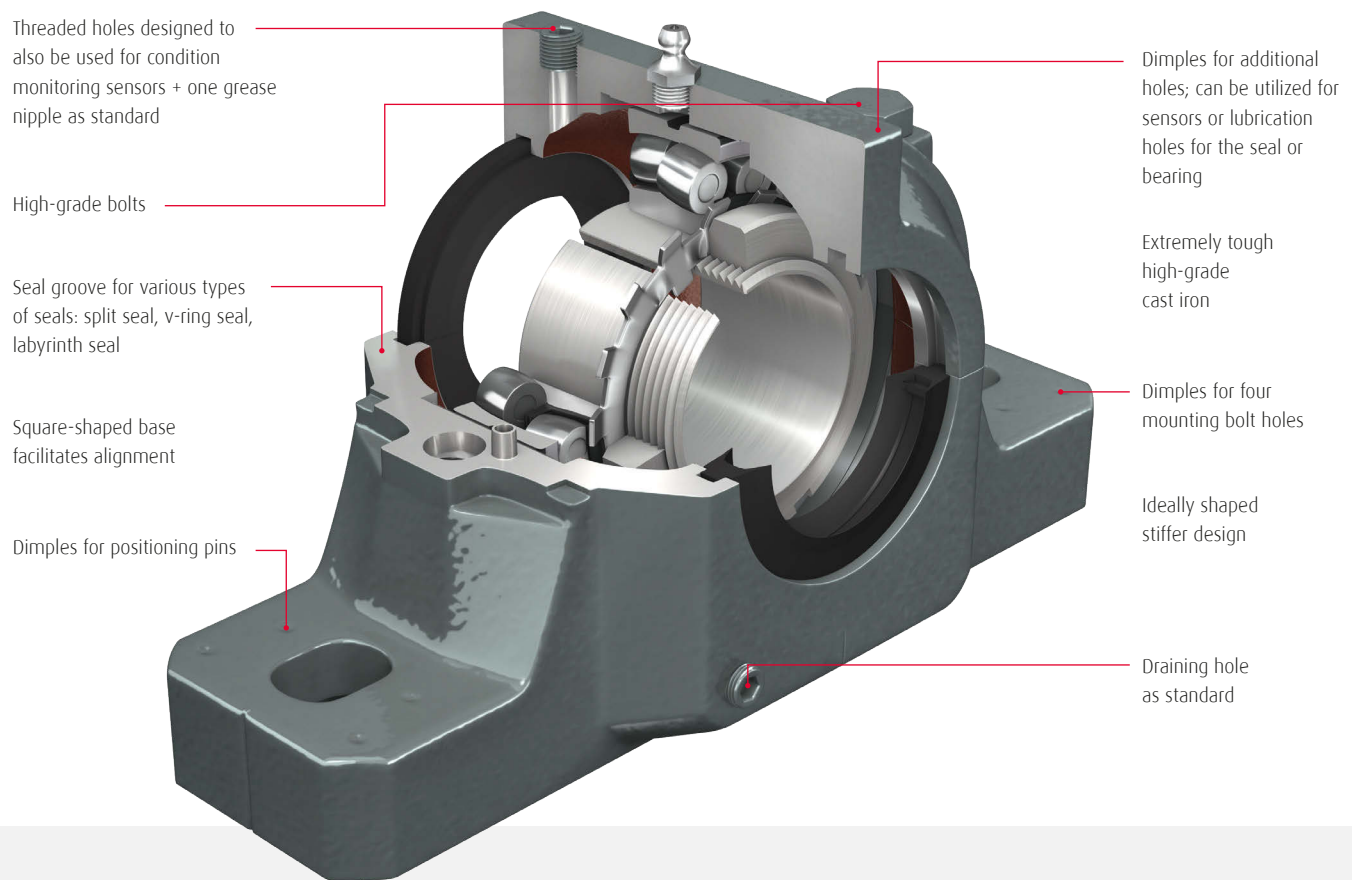
The SNN Series encompasses a broad range of the most capable, intelligently engineered, and mission-tested split pillow blocks, precisely optimized for diverse applications. With flexibility to accommodate a range of bearing and seal selection, mounting, locking and lubrication options, the SNN Series will exceed your goals of improved performance, productivity and service life. And they're from NSK, a global leader in bearing technology and process efficiency.



DESIGN AND OPERATING BENEFITS

FLEXIBLE FEATURES. STRUCTURAL TOUGHNESS.

High-performance SNN Series pillow block housings are highly rigid and easy to handle. Their innovative cast iron modular casting design results in a strong and lightweight housing. A variety of dimples, holes and free surfaces facilitate easy and convenient installation and maintenance.



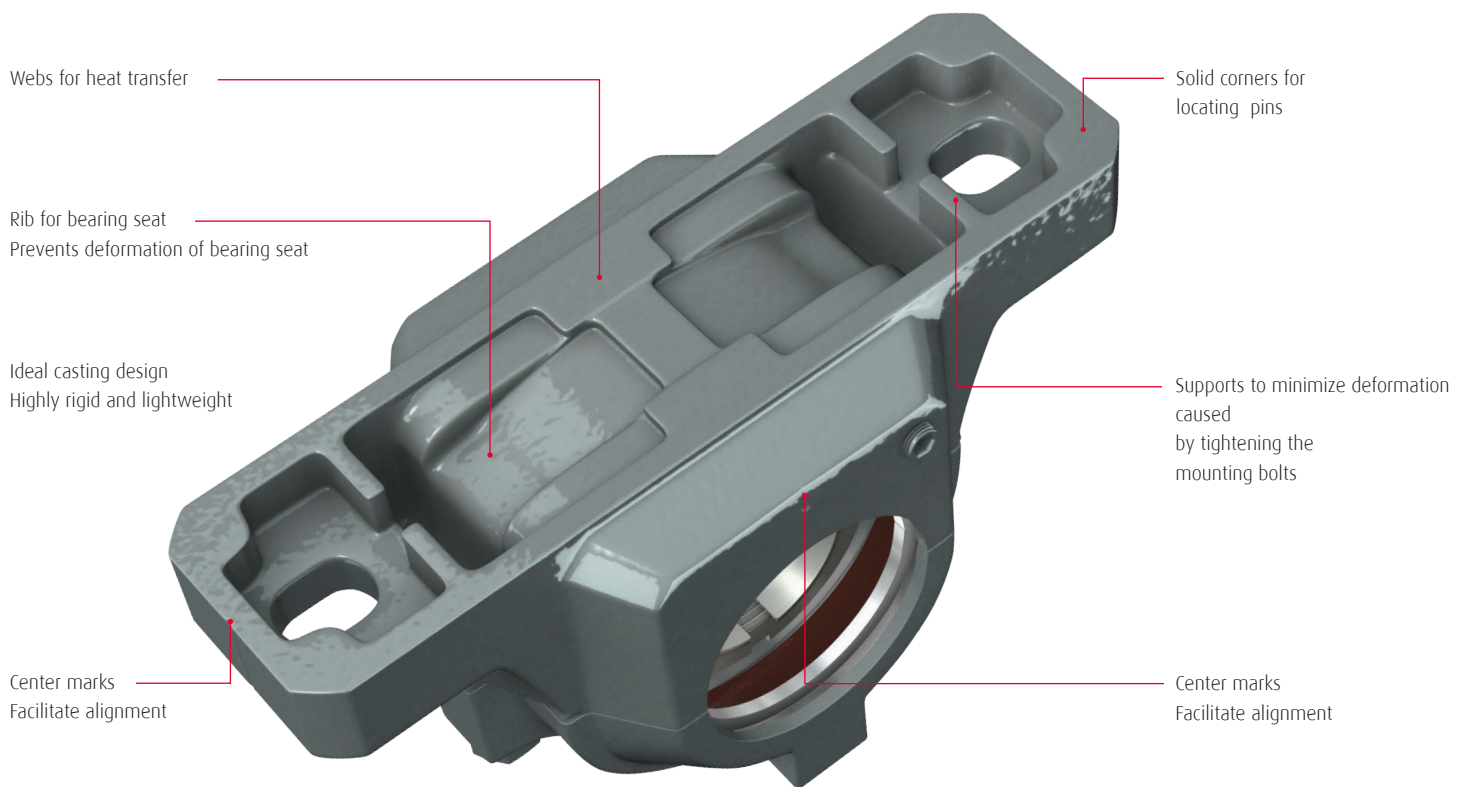
DESIGN FEATURES

- › Manufactured from cast iron grade 200
- › Available for shaft diameters from 20 to 140 mm and/or 3/4" to 5 1/2"
- › Threaded lubrication hole(s) on the cap and 1 drainage outlet on the base
- › Dimples on the housing surface facilitate additional holes for sensors, lubrication, mounting bolts or locating pins
- › Large oil bath to maximize oil change intervals
- › Contact and non-contact seal options

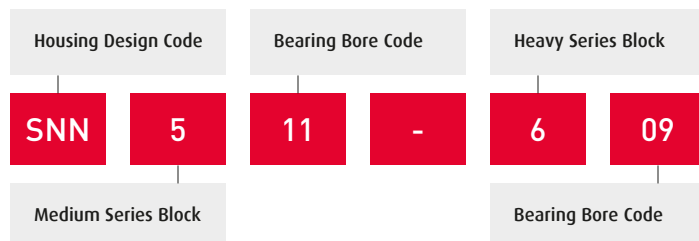
OPERATIONAL ADVANTAGES

- › Highly rigid and lightweight
- › High precision bore for optimum bearing seating
- › Split block design allows for easy mounting and dismounting of pre-assembled shafts.
- › Suitable for both grease and oil lubrication
- › Multiple relubrication points possible
- › Square shaped base and center marks facilitate alignment
- › Modular design permits one housing to accommodate multiple bearing types and diameters

The SNN Series includes a range of features that make accurate alignment and secure mounting easier. Robust features prevent structural deformation.



DESIGNATION SYSTEM



500 Series

For light series bearings with tapered bore
1200K, 2200K, 22200K, 23200K

600 Series

For medium series bearings with tapered bore
1300K, 2300K, 21300K, 22300K

BEARING AND SEAL OPTIONS

OPTIMIZED FOR THE JOB AND ENVIRONMENT

NSK's modular SNN housing range offers various technical options to match the needs of the most demanding applications. The same housing can be used with both NSKHPS spherical roller bearings or double row self-aligning ball bearings. With seal options to suit a range of operating and environmental conditions, the SNN series delivers a solution for most pillow block applications with shaft diameters up to 140 mm (5 1/2").



NSKHPS SPHERICAL ROLLER BEARINGS

NSKHPS Spherical Roller Bearings are designed to outperform and outlast conventional designs, accommodating high loads and high speeds to deliver a reliably long operating life.

- › Optimized internal design yields high load capacity and high speed capability
- › Advanced raceway surface finishing for durability and wear resistance
- › With high strength pressed steel cage with wear-resistant surface treatment (EA) or one-piece machined brass (CAM) cage
- › High temperature stability specification
- › Cylindrical or tapered bore
- › C2, C-Normal, C3 and C4 clearance

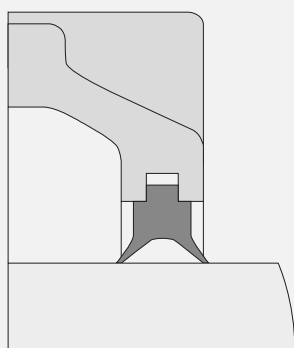
SELF-ALIGNING BALL BEARINGS

- › Double row bearings with a spherical outer ring raceway
- › Suitable for compensating for angular misalignment
- › Cylindrical and tapered bores
- › Normally available with glass-fiber reinforced Polyamide 66
- › C-Normal and C3 clearance

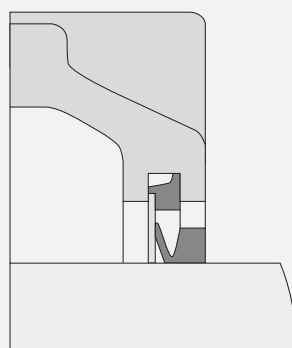


SEAL OPTIONS AND CHARACTERISTICS

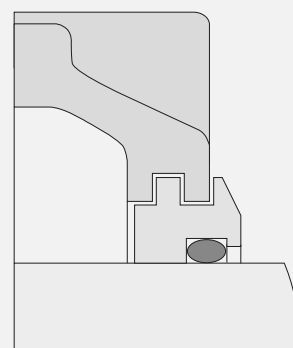
G-LOK - contact seal



V-RING - contact seal



TS-RING - non-contact seal



SEAL PERFORMANCE

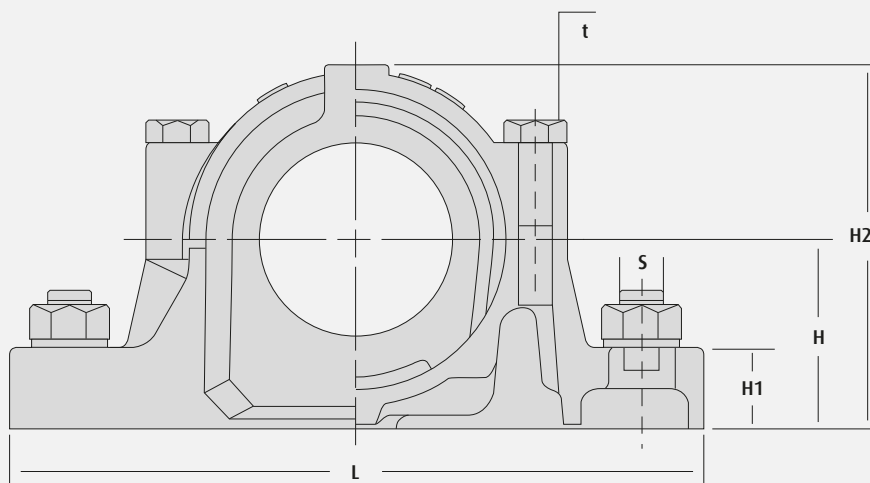
	G-LOK	V-RING	TS-RING
Temperature range	excellent	excellent	good
Oil lubrication	fair	good	excellent
Friction torque	good	good	excellent
Axial shaft displacement	excellent	poor	fair
Speed	5 m/s	7 m/s	same as bearing
Temperature range	-20 to 80°C	-20 to 80°C	-20 to 120°C

SEAL PROTECTION CHARACTERISTICS

	G-LOK	V-RING	TS-RING
Dust	excellent	excellent	good
Large particles	good	poor	good
Water	good	good	poor

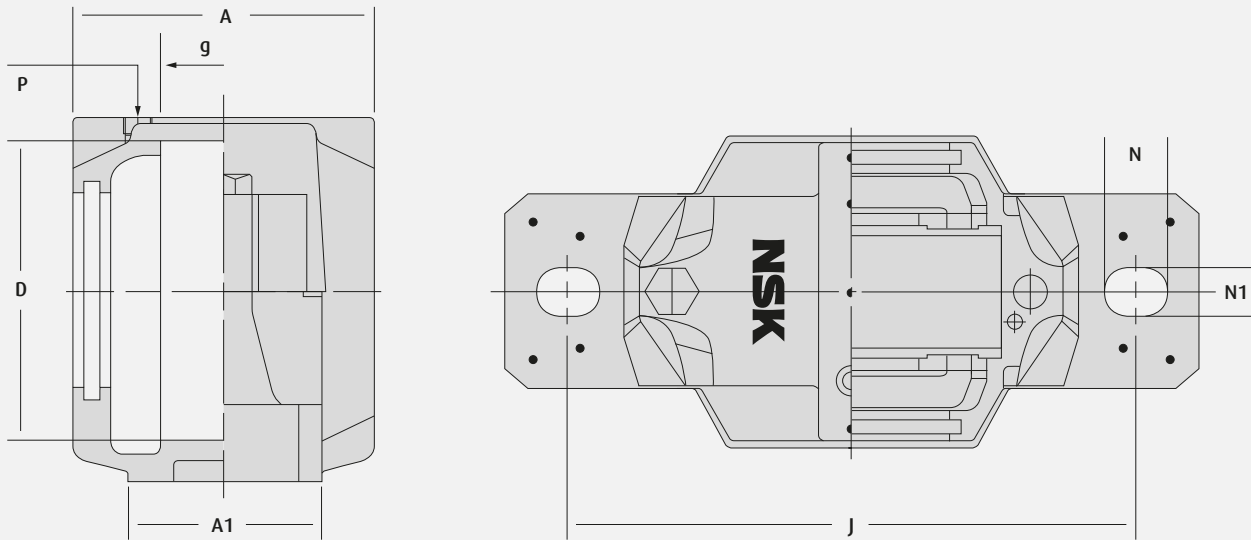
PILLOW BLOCK ASSEMBLY COMPONENTS AND DIMENSIONS

FOR SHAFT DIAMETERS 20 TO 40 MM, 3/4" TO 1 1/2"



SHAFT DIAMETER			PILLOW BLOCK ASSEMBLY COMPONENTS													
mm	in1	in2	Pillow Block	Basic Bearing		Adapter Sleeve			Seal Options			Fixing Ring		Endcover	Weight (kg)	
				ball	roller	metric	in1	in2	G-LOK	V-RING	TS-RING		qty		ball	roller
20	3/4		SNN505	1205K		H205		HE205	G505	V505	TS505 ²	FR52X5	2	A505	2.3	
				2205K	22205K	H305		HE305				FR52X5	1		2.3	2.3
			SNN506-605	1305K	21305K	H305		HE305	G605	V605	TS605 ²	FR62X7.5	2	A506	2.3	2.3
				2305K		H2305						FR62X8	1		2.4	
25	15/16	1	SNN506-605	1206K		H206	HA206	HE206	G506	V506	TS506 ¹	FR62X8	2	A506	2.3	
				2206K	22206K	H306	HA306	HE306				FR62X12	1		2.4	2.4
			SNN507-606	1306K	21306K	H306	HA306	HE306	G606	V606	TS606 ^{1,2}	FR72X7.5	2	A507	2.7	2.7
				2306K		H2306	HA2306	HE2306				FR72X7	1		2.8	
30	1.3/16		SNN507-606	1207K		H207	HA207		G507	V507	TS507 ¹	FR72X8.5	2	A507	2.7	
				2207K	22207K	H307	HA307					FR72X11	1		2.7	2.8
			SNN508-607	1307K	21307K	H307	HA307		G607	V607	TS607 ¹	FR80X9	2	A508	3.6	3.6
				2307K		H2307	HA2307					FR80X8	1		3.7	
35	1.1/4		SNN508-607	1208K		H208		HE208	G508 ²	V508 ²	TS508 ²	FR80X10.5	2	A508	3.6	
				2208K	22208K	H308		HE308				FR80X8	2		3.6	3.7
			SNN510-608	1308K	21308K	H308		HE308	G608 ²	V608 ²	TS608 ²	FR90X9	2	A510	4.1	4.1
				2308K	22308K	H2308		HE2308				FR90X8	1		4.2	4.4
40	1.7/16	1.1/2	SNN509	1209K		H209	HA209	HE209	G509 ¹	V509 ¹	TS509 ^{1,2}	FR85X5.5	2	A509	3.7	
				2209K	22209K	H309	HA309	HE309				FR85X7	1		3.8	3.9
			SNN511-609	1309K	21309K	H309	HA309	HE309	G609 ¹	V609 ¹	TS609 ^{1,2}	FR100X9.5	2	A511	6.1	6.1
				2309K	22309K	H2309	HA2309	HE2309				FR100X8	1		6.3	6.5

¹ add suffix A for shaft diameter "in1"
² add suffix E for shaft diameter "in2"

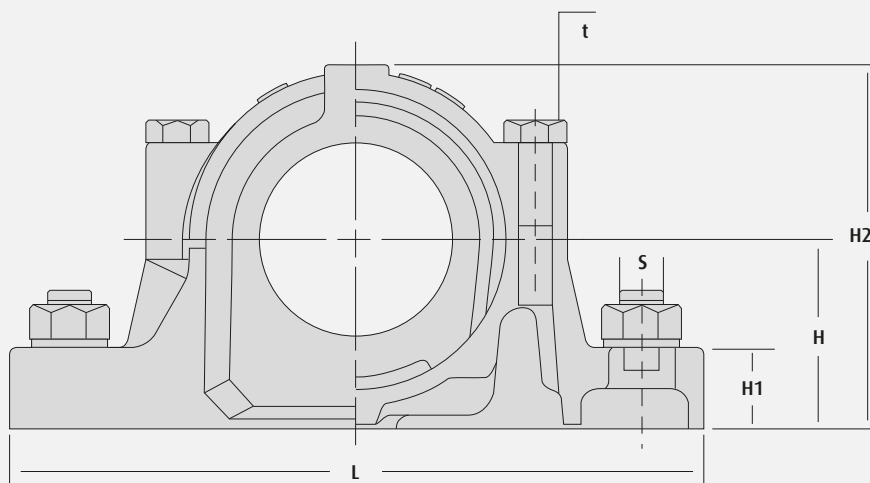


PILLOW BLOCK DIMENSIONS

D mm/in	H mm/in	J mm/in	A mm/in	L mm/in	A1 mm/in	H1 mm/in	H2 mm/in	g mm	t mm/in	Torque ft-lbf	N mm/in	N1 mm/in	S mm/in	P	Housing Weight (kg)
52 1.9/16	40 1.5/16	130 5.1/8	70 2.3/4	165 6.1/2	46 1.13/16	22 7/8	73 2.7/8	25	M10	32.4	20 13/16	15 9/16	M12 1/2	R 1/8	2.0
62 1.15/16	50 1.9/16	150 5.7/8	80 3.1/8	185 7.5/16	52 2.1/16	22 7/8	88 3.7/16	32	M10	32.4	20 13/16	15 9/16	M12 1/2	R 1/8	2.0
62 1.15/16	50 1.9/16	150 5.7/8	80 3.1/8	185 7.5/16	52 2.1/16	22 7/8	88 3.7/16	32	M10	32.4	20 13/16	15 9/16	M12 1/2	R 1/8	2.0
72 1.15/16	50 1.9/16	150 5.7/8	85 3.3/8	185 7.5/16	52 2.1/16	22 7/8	93 3.11/16	34	M10	32.4	20 13/16	15 9/16	M12 1/2	R 1/8	2.2
72 1.15/16	50 1.9/16	150 5.7/8	85 3.3/8	185 7.5/16	52 2.1/16	22 7/8	93 3.11/16	34	M10	32.4	20 13/16	15 9/16	M12 1/2	R 1/8	2.2
80 2.3/8	60 2.3/8	170 6.11/16	90 3.9/16	205 8.1/16	60 2.3/8	25 1	107 4.3/16	39	M10	32.4	20 13/16	15 9/16	M12 1/2	R 1/8	2.9
80 2.3/8	60 2.3/8	170 6.11/16	90 3.9/16	205 8.1/16	60 2.3/8	25 1	107 4.3/16	39	M10	32.4	20 13/16	15 9/16	M12 1/2	R 1/8	2.9
90 2.3/8	60 2.3/8	170 6.11/16	95 3.3/4	205 8.1/16	60 2.3/8	25 1	113 4.7/16	41	M10	32.4	20 13/16	15 9/16	M12 1/2	R 1/8	3.1
85 2.3/8	60 2.3/8	170 6.11/16	90 3.9/16	205 8.1/16	60 2.3/8	25 1	111 4.3/8	30	M10	32.4	20 13/16	15 9/16	M12 1/2	R 1/8	3.0
100 2.3/4	70 2.3/4	210 8.1/4	100 3.15/16	255 10.1/16	70 2.3/4	28 1.1/8	129 5.1/16	44	M12	56.1	24 15/16	18 11/16	M16 5/8	R 1/8	4.8

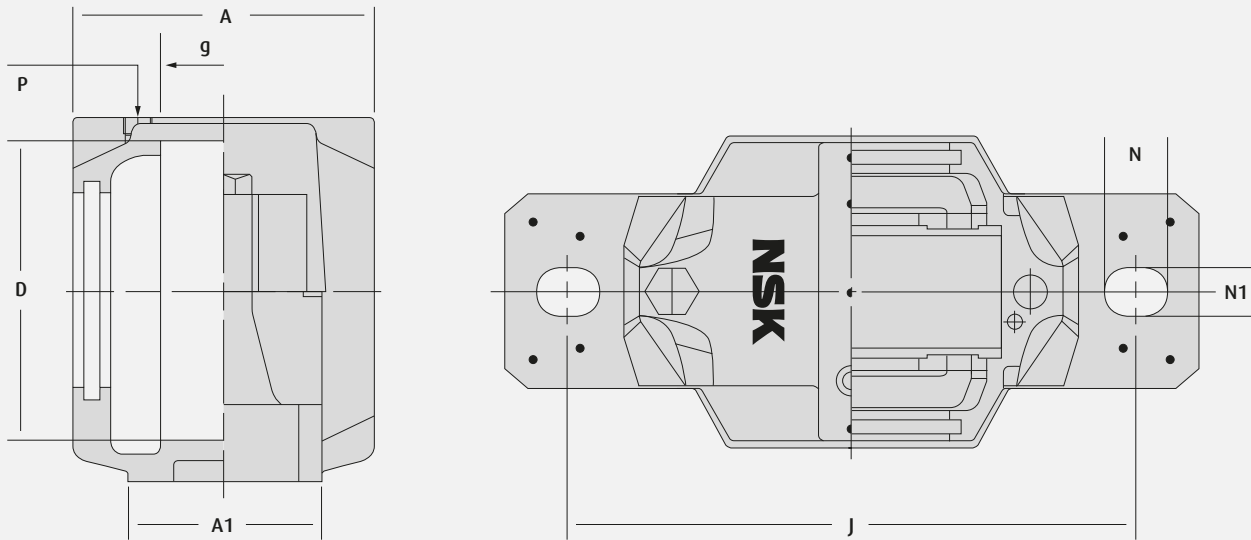
PILLOW BLOCK ASSEMBLY COMPONENTS AND DIMENSIONS

FOR SHAFT DIAMETERS 45 TO 65 MM, 1 11/16" TO 2 1/2"



SHAFT DIAMETER			PILLOW BLOCK ASSEMBLY COMPONENTS													
mm	in1	in2	Pillow Block	Basic Bearing		Adapter Sleeve			Seal Options			Fixing Ring		Endcover	Weight (kg)	
				ball	roller	metric	in1	in2	G-LOK	V-RING	TS-RING		qty		ball	roller
45	1.11/16	1.3/4	SNN510-608	1210K		H210	HA210	HE210	G510	V510	TS510 ^{1,2}	FR90X10.5	2	A510	4.0	
				2210K	22210K	H310	HA310	HE310				FR90X9	2		4.0	4.1
			SNN512-610	1310K	21310K	H310	HA310	HE310	G610	V610	TS610 ^{1,2}	FR110X10.5	2	A512	7.0	7.0
				2310K	22310K	H2310	HA2310	HE2310				FR110X8	1		7.4	7.6
50	1.15/16	2	SNN511-609	1211K		H211	HA211	HE211	G511	V511	TS511 ^{1,2}	FR100X11.5	2	A511	5.9	
				2211K	22211K	H311	HA311	HE311				FR100X9.5	2		6.0	6.1
			SNN513-611	1311K	21311K	H311	HA311	HE311	G611	V611	TS611 ^{1,2}	FR120X11	2	A513	8.6	8.6
				2311K	22311K	H2311	HA2311	HE2311				FR120X8	1		9.1	9.4
55			SNN512-610	1212K		H212			G512	V512	TS512	FR110X13	2	A512	6.8	
				2212K	22212K	H312						FR110X10	2		6.9	7.1
			SNN515-612	1312K	21312K	H312			G612	V612	TS612	FR130X12.5	2	A515	9.4	9.4
				2312K	22312K	H2312						FR130X10	1		9.9	10.3
60	2.3/16	2.1/4	SNN513-611	1213K		H213	HA213	HE213	G513 ¹	V513 ¹	TS513 ^{1,2}	FR120X14	2	A513	8.3	
				2213K	22213K	H313	HA313	HE313				FR120X10	2		8.6	8.7
			SNN516-613	1313K	21313K	H313	HA313	HE313	G613 ¹	V613 ¹	TS613 ^{1,2}	FR140X12.5	2	A516	13.4	13.3
				2313K	22313K	H2313	HA2313	HE2313				FR140X10	1		14.0	14.4
65	2.7/16	2.1/2	SNN515-612	1215K		H215	HA215	HE215	G515	V515	TS515 ^{1,2}	FR130X15.5	2	A515	9.1	
				2215K	22215K	H315	HA315	HE315				FR130X12.5	2		9.4	9.5
			SNN518-615	1315K	21315K	H315	HA315	HE315	G615	V615	TS615 ^{1,2}	FR160X14	2	A518	17.5	
				2315K	22315K	H2315	HA2315	HE2315				FR160X10	1		18.9	19.4

¹ add suffix A for shaft diameter "in1"
² add suffix E for shaft diameter "in2"

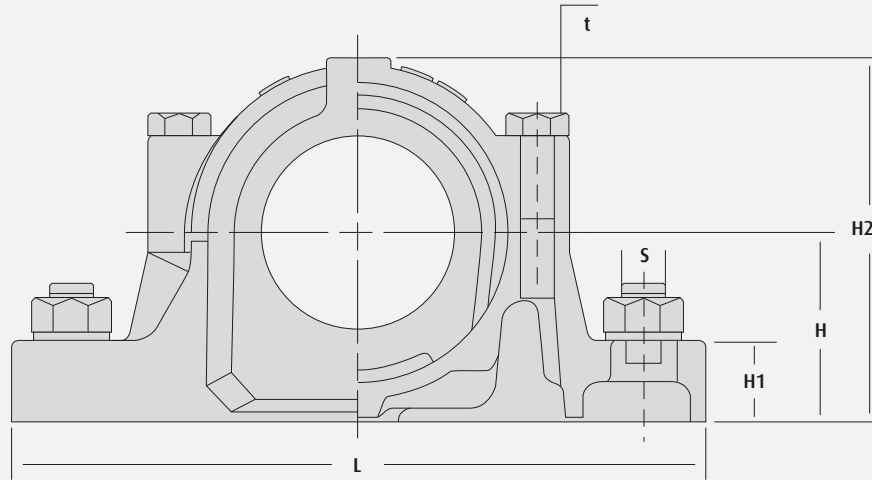


PILLOW BLOCK DIMENSIONS

D mm/in	H mm/in	J mm/in	A mm/in	L mm/in	A1 mm/in	H1 mm/in	H2 mm/in	g mm	t mm/in	Torque ft-lbf	N mm/in	N1 mm/in	S mm/in	P	Housing Weight (kg)
90 2.3/8	60 2.3/8	170 6.11/16	95 3.3/4	205 8.1/16	60 2.3/8	25 1	113 4.7/16	41	M10	32.4	20 13/16	15 9/16	M12 1/2	R 1/8	3.1
110 2.3/4	70 2.3/4	210 8.1/4	110 4.5/16	255 10.1/16	70 2.3/4	30 1.3/16	134 5.1/4	48	M12	56.1	24 15/16	18 11/16	M16 5/8	R 1/8	5.4
100 2.3/4	70 2.3/4	210 8.1/4	100 3.15/16	255 10.1/16	70 2.3/4	28 1.1/8	129 5.1/16	44	M12	56.1	24 15/16	18 11/16	M16 5/8	R 1/8	4.8
120 3.1/8	80 3.1/8	230 9.1/16	115 4.1/2	275 10.13/16	80 3.1/8	30 1.3/16	150 5.7/8	51	M12	56.1	24 15/16	18 11/16	M16 5/8	R 1/8	6.6
110 2.3/4	70 2.3/4	210 8.1/4	110 4.5/16	255 10.1/16	70 2.3/4	30 1.3/16	134 5.1/4	48	M12	56.1	24 15/16	18 11/16	M16 5/8	R 1/8	5.4
130 3.1/8	80 3.1/8	230 9.1/16	120 4.3/4	280 11	80 3.1/8	30 1.3/16	155 6.1/8	56	M12	56.1	24 15/16	18 11/16	M16 5/8	R 1/8	6.8
120 3.1/8	80 3.1/8	230 9.1/16	115 4.1/2	275 10.13/16	80 3.1/8	30 1.3/16	150 5.7/8	51	M12	56.1	24 15/16	18 11/16	M16 5/8	R 1/8	6.6
140 3.3/4	95 3.3/4	260 10.1/4	130 5.1/8	315 12.3/8	90 3.9/16	32 1.1/4	175 6.7/8	58	M16	140.2	28 1.1/8	22 7/8	M20 3/4	R 1/4	10.2
130 3.1/8	80 3.1/8	230 9.1/16	120 4.3/4	280 11	80 3.1/8	30 1.3/16	155 6.1/8	56	M12	56.1	24 15/16	18 11/16	M16 5/8	R 1/8	6.8
160 3.15/16	100 3.15/16	290 11.7/16	145 5.11/16	345 13.6/16	100 3.15/16	35 1.3/8	193 7.5/8	65	M16	140.2	28 1.1/8	22 7/8	M20 3/4	R 1/4	13.0

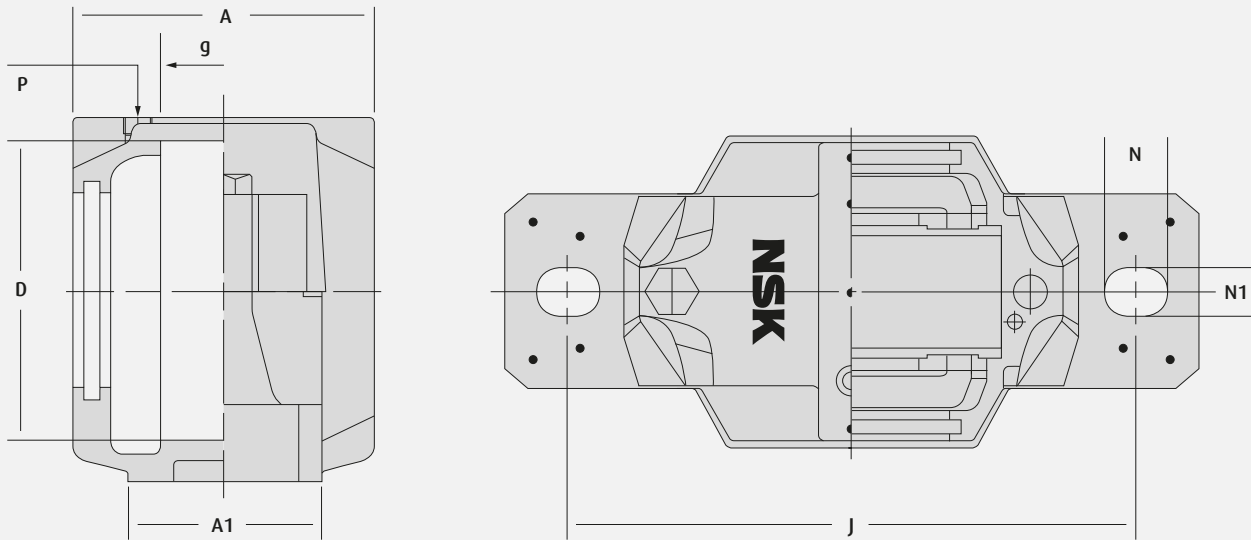
PILLOW BLOCK ASSEMBLY COMPONENTS AND DIMENSIONS

FOR SHAFT DIAMETERS 70 TO 90 MM, 2 11/16" TO 3 1/2"



SHAFT DIAMETER			PILLOW BLOCK ASSEMBLY COMPONENTS													
mm	in1	in2	Pillow Block	Basic Bearing		Adapter Sleeve			Seal Options			Fixing Ring		Endcover	Weight (kg)	
				ball	roller	metric	in1	in2	G-LOK	V-RING	TS-RING		qty		ball	roller
70	2.11/16	2.3/4	SNN516-613	1216K		H216	HA216	HE216	G516	V516	TS516 ^{1,2}	FR140X16	2	A516	13.0	
				2216K	22216K	H316	HA316	HE316				FR140X12.5	2		13.3	13.4
			SNN519-616	1316K	21316K	H316	HA316	HE316	G616	V616	TS616 ^{1,2}	FR170X14.5	2	A519	19.9	20.0
				2316K	22316K	H2316	HA2316	HE2316				FR170X10	1		21.5	22.3
75	2.15/16	3	SNN517	1217K		H217	HA217	HE217	G517	V517 ²	TS517 ^{1,2}	FR150X16.5	2	A517	14.5	
				2217K	22217K	H317	HA317	HE317				FR150X12.5	2		15.0	15.2
			SNN520-617	1317K	21317K	H317	HA317	HE317	G617	V617 ²	TS617 ^{1,2}	FR180X14.5	2	A520	24.8	24.8
				2317K	22317K	H2317	HA2317	HE2317				FR180X10	1		26.4	27.2
80	3.3/16	3.1/4	SNN518-615	1218K		H218	HA218	HE218	G518	V518 ²	TS518 ^{1,2}	FR160X17.5	2	A518	17.0	
				2218K	22218K	H318	HA318	HE318				FR160X12.5	2		17.8	18.0
					23218K	H2318	HA2318	HE2318				FR160X12.5	1			19.3
85			SNN519-616	1219K		H219			G519	V519	TS519	FR170X18	2	A519	19.2	
				2219K	22219K	H319						FR170X12.5	2		20.2	20.5
			SNN522-619	1319K	21319K	H319			G619	V619	TS619	FR200X17.5	1	A522	32.9	33.2
				2319K	22319K	H2319						FR200X13	1		35.2	36.3
90	3.7/16	3.1/2	SNN520-617	1220K		H220	HA220	HE220	G520	V520	TS520 ^{1,2}	FR180X18	2	A520	23.7	
				2220K	22220K	H320	HA320	HE320				FR180X12	2		25.0	25.3
					23220K	H2320	HA2320	HE2320				FR180X9.5	1			27.2
			SNN524-620	1320K	21320K	H320	HA320	HE320	G620	V620	TS620 ^{1,2}	FR215X13	3	A524	36.5	37.4
				22320K	H2320	HA2320	HE2320				FR215X13	1			41.5	

¹ add suffix A for shaft diameter "in1"
² add suffix E for shaft diameter "in2"

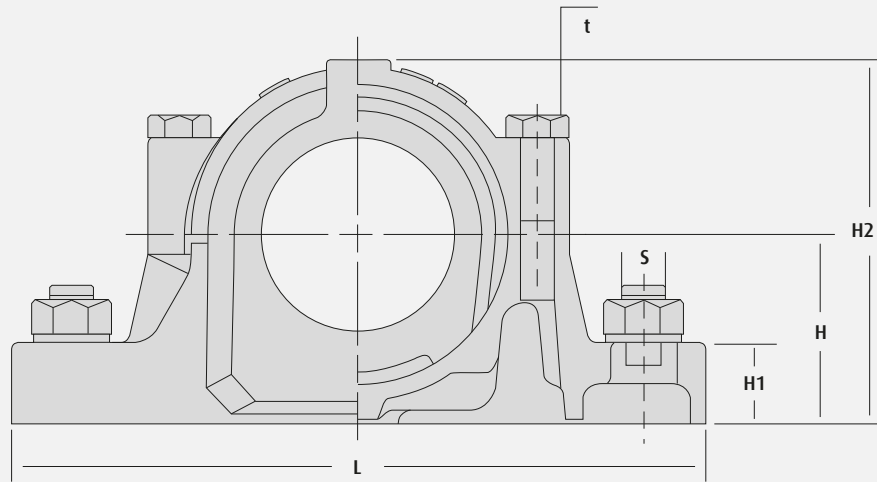


PILLOW BLOCK DIMENSIONS

D mm/in	H mm/in	J mm/in	A mm/in	L mm/in	A1 mm/in	H1 mm/in	H2 mm/in	g mm	t mm/in	Torque ft-lbf	N mm/in	N1 mm/in	S mm/in	P	Housing Weight (kg)
140 3.3/4	95 3.3/4	260 10.1/4	130 5.1/8	315 12.3/8	90 3.9/16	32 1.1/4	175 6.7/8	58	M16	140.2	28 1.1/8	22 7/8	M20 3/4	R 1/4	10.2
170 4.7/16	112 4.7/16	290 11.7/16	145 5.11/16	345 13.6/16	100 3.15/16	35 1.3/8	210 8.1/4	68	M16	140.2	28 1.1/8	22 7/8	M20 3/4	R 1/4	14.5
150 3.3/4	95 3.3/4	260 10.1/4	135 5.5/16	320 12.5/8	90 3.9/16	32 1.1/4	183 7.3/16	61	M16	140.2	28 1.1/8	22 7/8	M20 3/4	R 1/4	11.2
180 4.7/16	112 4.7/16	320 12.5/8	160 6.5/16	380 14.15/16	110 4.5/16	40 1.9/16	215 8.7/16	70	M20	272.9	32 1.1/4	26 1	M24 1	R 1/4	18.3
160 3.15/16	100 3.15/16	290 11.7/16	145 5.11/16	345 13.6/16	100 3.15/16	35 1.3/8	193 7.5/8	65	M16	140.2	28 1.1/8	22 7/8	M20 3/4	R 1/4	13.0
170 4.7/16	112 4.7/16	290 11.7/16	145 5.11/16	345 13.6/16	100 3.15/16	35 1.3/8	210 8.1/4	68	M16	140.2	28 1.1/8	22 7/8	M20 3/4	R 1/4	14.5
200 4.15/16	125 4.15/16	350 13.3/4	175 6.7/8	410 16.1/8	120 4.3/4	45 1.3/4	240 9.7/16	80	M20	272.9	32 1.1/4	26 1	M24 1	R 1/4	24.0
180 4.7/16	112 4.7/16	320 12.5/8	160 6.5/16	380 14.15/16	110 4.5/16	40 1.9/16	215 8.7/16	70	M20	272.9	32 1.1/4	26 1	M24 1	R 1/4	18.3
215 5.1/2	140 5.1/2	350 13.3/4	185 7.5/16	410 16.1/8	120 4.3/4	45 1.3/4	271 10.11/16	86	M20	272.9	32 1.1/4	26 1	M24 1	R 3/8	26.2

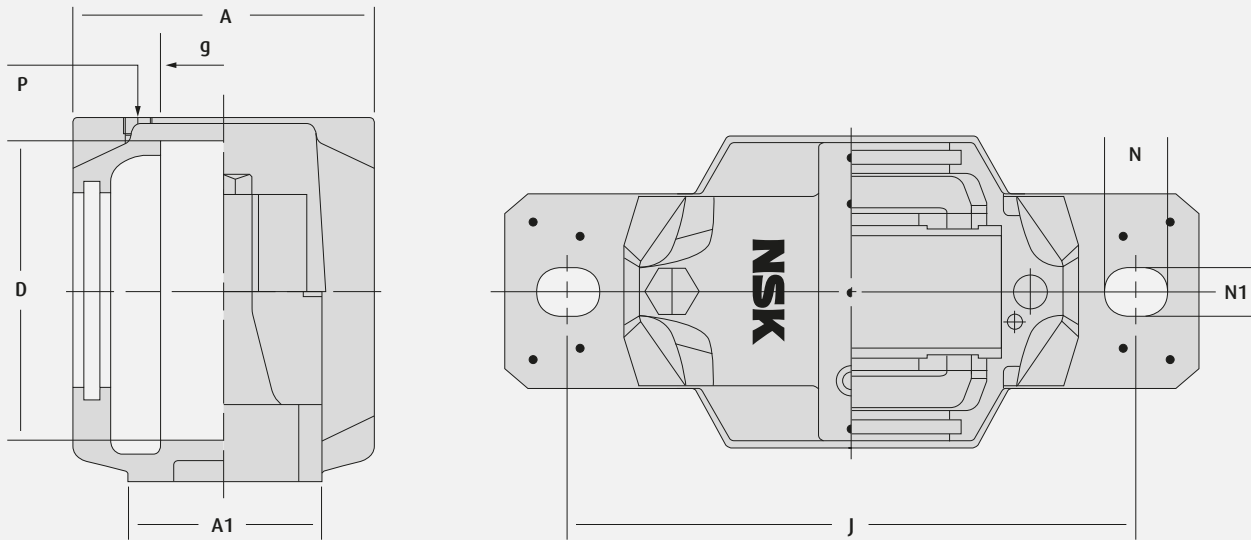
PILLOW BLOCK ASSEMBLY COMPONENTS AND DIMENSIONS

FOR SHAFT DIAMETERS 100 TO 140 MM, 3 15/16" TO 5 1/2"



SHAFT DIAMETER			PILLOW BLOCK ASSEMBLY COMPONENTS													
mm	in1	in2	Pillow Block	Basic Bearing		Adapter Sleeve			Seal Options			Fixing Ring		Endcover	Weight (kg)	
				ball	roller	metric	in1	in2	G-LOK	V-RING	TS-RING		qty		ball	roller
100	3.15/16	4	SNN522-619	1222K		H222	H222	HE222	G522	V522	TS522 ^{1,2}	FR200X21	2	A522	31.4	
				2222K	22222K	H322	H322	HE322				FR200X13.5	2		33.2	33.9
					23222K	H2322	H2322	HE2322				FR200X10	1			36.5
110	4.3/16	4.1/4	SNN524-620	22224K		H3124	HA3124	HE3124	G524	V524	TS524 ^{1,2}	FR215X14	2	A524	38.1	
					23224K	H2324	HA2324	HE2324				FR215X10	1			41.7
115	4.7/16	4.1/2	SNN526	22226K		H3126	HA3126	HE3126	G526	V526	TS526 ^{1,2}	FR230X13	2	A526	48.3	
					23226K	H2326	HA2326	HE2326				FR230X10	1			52.1
125	4.15/16	5	SNN528	22228K		H3128	HA3128	HE3128	G528	V528 ²	TS528 ^{1,2}	FR250X15	2	A528	59.3	
					23228K	H2328	HA2328	HE2328				FR250X10	1			64.6
135	5.3/16	5.1/4	SNN530	22230K		H3130	HA3130	HE3130	G530	V530	TS530 ^{1,2}	FR270X16.5	2	A530	73.4	
					23230K	H2330	HA2330	HE2330				FR270X10	1			80.1
140	5.7/16	5.1/2	SNN532	22232K		H3132	HA3132	HE3132	G532	V532	TS532 ^{1,2}	FR290X17	2	A532	86.3	
					23232K	H2332	HA2332	HE2332				FR290X10	1			95.0

¹ add suffix A for shaft diameter "in1"
² add suffix E for shaft diameter "in2"

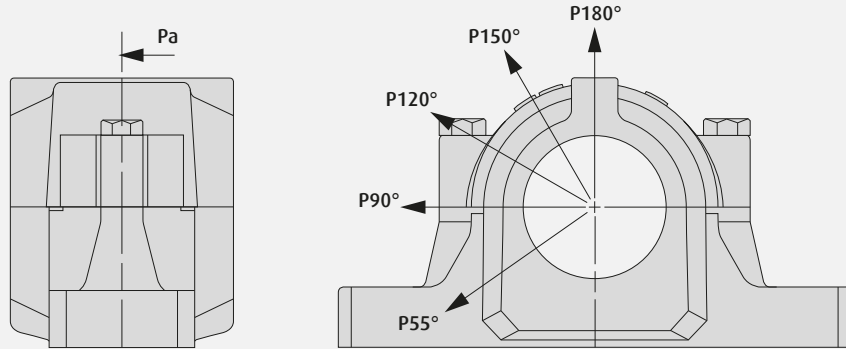


PILLOW BLOCK DIMENSIONS

D mm/in	H mm/in	J mm/in	A mm/in	L mm/in	A1 mm/in	H1 mm/in	H2 mm/in	g mm	t mm/in	Torque ft-lbf	N mm/in	N1 mm/in	S mm/in	P	Housing Weight (kg)
200 4.15/16	125 4.15/16	350 13.3/4	175 6.7/8	410 16.1/8	120 4.3/4	45 1.3/4	240 9.7/16	80	M20	272.9	32 1.1/4	26 1	M24 1	R 1/4	24.0
215 5.1/2	140 5.1/2	350 13.3/4	185 7.5/16	410 16.1/8	120 4.3/4	45 1.3/4	271 10.11/16	86	M20	272.9	32 1.1/4	26 1	M24 1	R 3/8	26.2
230 5.7/8	150 5.7/8	380 14.15/16	190 7.1/2	445 17.1/2	130 5.1/8	50 1.15/16	288 11.5/16	90	M24	472	35 1.3/8	28 1.1/8	M24 1	R 3/8	33.0
250 5.7/8	150 5.7/8	420 16.9/16	205 8.1/16	500 19.11/16	150 5.7/8	50 1.15/16	298 11.3/4	98	M24	472	42 1.5/8	35 1.3/8	M30 1.1/4	R 3/8	40.0
270 6.5/16	160 6.5/16	450 17.11/16	220 8.11/16	530 20.7/8	160 6.5/16	60 2.3/8	322 12.11/16	106	M24	472	42 1.5/8	35 1.3/8	M30 1.1/4	R 3/8	49.0
290 6.11/16	170 6.11/16	470 18.1/2	235 9.1/4	550 21.5/8	160 6.5/16	60 2.3/8	342 13.7/16	114	M24	472	42 1.5/8	35 1.3/8	M30 1.1/4	R 3/8	55.0

BREAKING LOADS

FOR SNN HOUSINGS

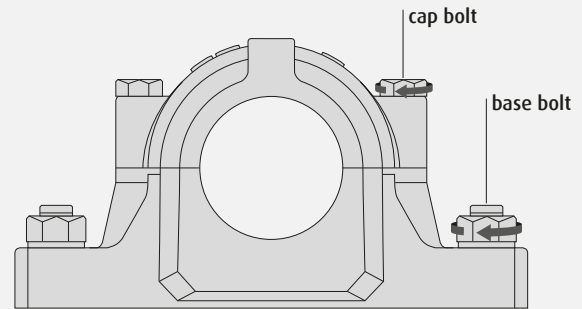


Pillow Block	BREAKING LOAD												Maximum Cap Bolt Load	
	Pa		P55°		P90°		P120°		P150°		P180°			
	kN	lbf	kN	lbf	kN	lbf	kN	lbf	kN	lbf	kN	lbf	kN	lbf
SNN505	52	11 500	155	35 000	95	21 500	70	15 500	60	13 500	80	18 000	25	5 500
SNN506-605	55	12 500	170	38 000	100	22 500	80	18 000	65	14 500	85	19 000	25	5 500
SNN507-606	60	13 500	190	42 500	115	26 000	85	19 000	80	18 000	95	21 500	25	5 500
SNN508-607	70	15 500	215	48 500	130	29 000	95	21 500	85	19 000	110	24 500	25	5 500
SNN509	75	17 000	230	51 500	140	31 500	100	22 500	90	20 000	115	26 000	25	5 500
SNN510-608	85	19 000	265	59 500	155	35 000	120	27 000	110	24 500	130	29 000	25	5 500
SNN511-609	90	20 000	275	62 000	170	38 000	125	28 000	115	26 000	140	31 500	40	9 000
SNN512-610	100	22 500	300	67 500	180	40 500	130	29 000	120	27 000	150	33 500	40	9 000
SNN513-609	110	24 500	340	76 500	205	46 000	150	33 500	130	29 000	170	38 000	40	9 000
SNN515-612	135	30 500	410	92 000	250	56 000	185	41 500	160	36 000	205	46 000	40	9 000
SNN516-613	140	31 500	430	96 500	260	58 500	190	42 500	175	39 500	215	48 500	40	9 000
SNN517	155	35 000	480	108 000	290	65 000	205	46 000	190	42 500	240	54 000	40	9 000
SNN518-615	180	40 500	550	123 500	340	76 500	250	56 000	215	48 500	275	62 000	85	19 000
SNN519-616	190	42 500	580	130 500	350	78 500	260	58 500	230	51 500	290	65 000	85	19 000
SNN520-617	200	45 000	620	139 500	370	83 000	280	63 000	250	56 000	310	69 500	130	29 000
SNN522-619	220	49 500	680	153 000	410	92 000	310	69 500	275	62 000	340	76 500	130	29 000
SNN524-620	260	58 500	790	177 500	470	105 500	350	78 500	320	72 000	400	90 000	130	29 000
SNN526	295	66 500	900	202 500	540	121 500	410	92 000	360	81 000	450	101 000	190	42 500
SNN528	345	77 500	1,050	236 000	630	141 500	470	105 500	430	96 500	530	119 000	190	42 500
SNN530	390	87 500	1,200	270 000	730	164 000	540	121 500	480	108 000	600	135 000	190	42 500
SNN532	470	105 500	1,450	326 000	860	193 500	640	144 000	570	128 000	720	162 000	190	42 500

Reference values only.

RECOMMENDED TIGHTENING TORQUE

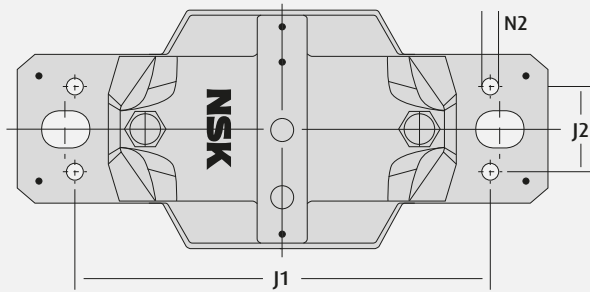
CAP & FIXING BOLTS SIZES



Pillow Block	RECOMMENDED MAXIMUM TORQUE					
	Cap Bolt Size Grade 8.8	Nm	ft-lb	Base Bolt Size Grade 8.8	Nm	ft-lb
SNN505	M10	50	37	M12	80	59
SNN506-605	M10	50	37	M12	80	59
SNN507-606	M10	50	37	M12	80	59
SNN508-607	M10	50	37	M12	80	59
SNN509	M10	50	37	M12	80	59
SNN510-608	M10	50	37	M12	80	59
SNN511-609	M12	80	59	M16	200	148
SNN512-610	M12	80	59	M16	200	148
SNN513-609	M12	80	59	M16	200	148
SNN515-612	M12	80	59	M16	200	148
SNN516-613	M16	150	111	M20	385	284
SNN517	M16	150	111	M20	385	284
SNN518-615	M16	150	111	M20	385	284
SNN519-616	M16	150	111	M20	385	284
SNN520-617	M20	200	148	M24	665	490
SNN522-619	M20	200	148	M24	665	490
SNN524-620	M20	200	148	M24	665	490
SNN526	M24	350	258	M24	665	490
SNN528	M24	350	258	M30	1,310	966
SNN530	M24	350	258	M30	1,310	966
SNN532	M24	350	258	M30	1,310	966

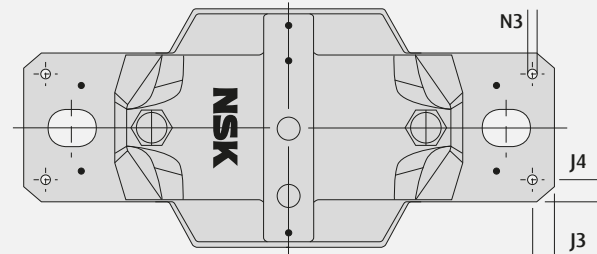
RECOMMENDED DIMENSIONS

4 BOLT FIXING HOLES / LOCATING PIN HOLES



RECOMMENDED DIMENSIONS: 4 BOLT FIXING HOLES (MM)

Pillow Block	J1	J2	N2	Bolt Size
SNN505	--	--	--	--
SNN506-605	--	--	--	--
SNN507-606	--	--	--	--
SNN508-607	160	34	11	M10
SNN509	160	34	11	M10
SNN510-608	160	34	11	M10
SNN511-609	200	40	14	M12
SNN512-610	200	40	14	M12
SNN513-611	210	48	14	M12
SNN515-612	220	48	14	M12
SNN516-613	244	52	18	M16
SNN517	254	52	18	M16
SNN518-615	275	58	18	M16
SNN519-616	275	58	18	M16
SNN520-617	300	66	18	M16
SNN522-619	320	74	18	M16
SNN524-620	320	74	18	M16
SNN526	355	84	22	M20
SNN528	400	92	26	M24
SNN530	430	100	26	M24
SNN532	450	100	26	M24



RECOMMENDED DIMENSIONS: LOCATING PIN HOLES (MM)

Pillow Block	J3	J4	N3 Max
SNN505	7	7	6
SNN506-605	8	8	6
SNN507-606	8	8	6
SNN508-607	9	9	8
SNN509	9	9	8
SNN510-608	9	9	8
SNN511-609	10	10	10
SNN512-610	10	10	10
SNN513-611	12	12	10
SNN515-612	12	12	10
SNN516-613	15	15	12
SNN517	15	15	12
SNN518-615	15	15	12
SNN519-616	15	15	12
SNN520-617	15	15	12
SNN522-619	18	18	16
SNN524-620	18	18	16
SNN526	18	18	16
SNN528	18	18	16
SNN530	18	18	16
SNN532	18	18	16

Note: 4 bolt fixing holes are not possible for pillow blocks SNN505 to SNN507-606.

NSK



NSK AMERICAS

United States
NSK Corporation
Ann Arbor MI
1.888.446.5675

Canada
NSK Canada Inc.
Mississauga ON
1.888.603.7667

Mexico
NSK Rodamientos Mexicana,
S.A. de C.V.
Silao Guanajuato MX
52.472.500.9500

Brazil
NSK Brasil Ltda.
Sao Paulo SP
55.11.3269.4700

Argentina
NSK Argentina SRL
Buenos Aires
54.11.4762.6556

Latin America
NSK Latin America Inc.
Miami FL
1.305.477.0605

Website:
www.nskamericas.com
NSK Global: www.nsk.com

Every care has been taken to ensure the accuracy of the data contained in this brochure, but no liability can be accepted for any loss or damage suffered through errors or omissions.

Printed in the USA ©NSK 2022.
The contents of the publication are the copyright of the publishers.